



## **BRANDON LOGIE**

Height 6'0" / 183cm

Chest 41" / 104cm Waist 32" / 81cm Inseam 32" / 81cm Suit 40" / 101cm / 50 Shoes 10.5

US / 44.5 EU / 10 UK

Hair Brown Eyes Blue / Green



**anm**  
MANAGEMENT

1159 Dundas St. E, #148 Toronto, ON M4M 3N9

Email: [info@anm-mgmt.com](mailto:info@anm-mgmt.com) Tel: 1.416.792.0357

[www.anm-mgmt.com](http://www.anm-mgmt.com)



## BRANDON LOGIE

Height 6'0" / 183cm

Chest 41" / 104cm Waist 32" / 81cm Inseam 32" / 81cm Suit 40" / 101cm / 50 Shoes 10.5

US / 44.5 EU / 10 UK

Hair Brown Eyes Blue / Green



### A SINISTRA

Abito tre pezzi in jersey di lana gessata, camicia in popeline di cotone con collo alla francese e bottoni ricoperti in tessuto, cravatta in lana, tutto **Emporio Armani** (prezzi su richiesta).

### A DESTRA

T-shirt in seta stampata, pantaloni in lana con coulisse in vita e stirati in pelle verniciata con dettagli in suede trapuntato, tutto **Dolce&Gabbana** (prezzi su richiesta).

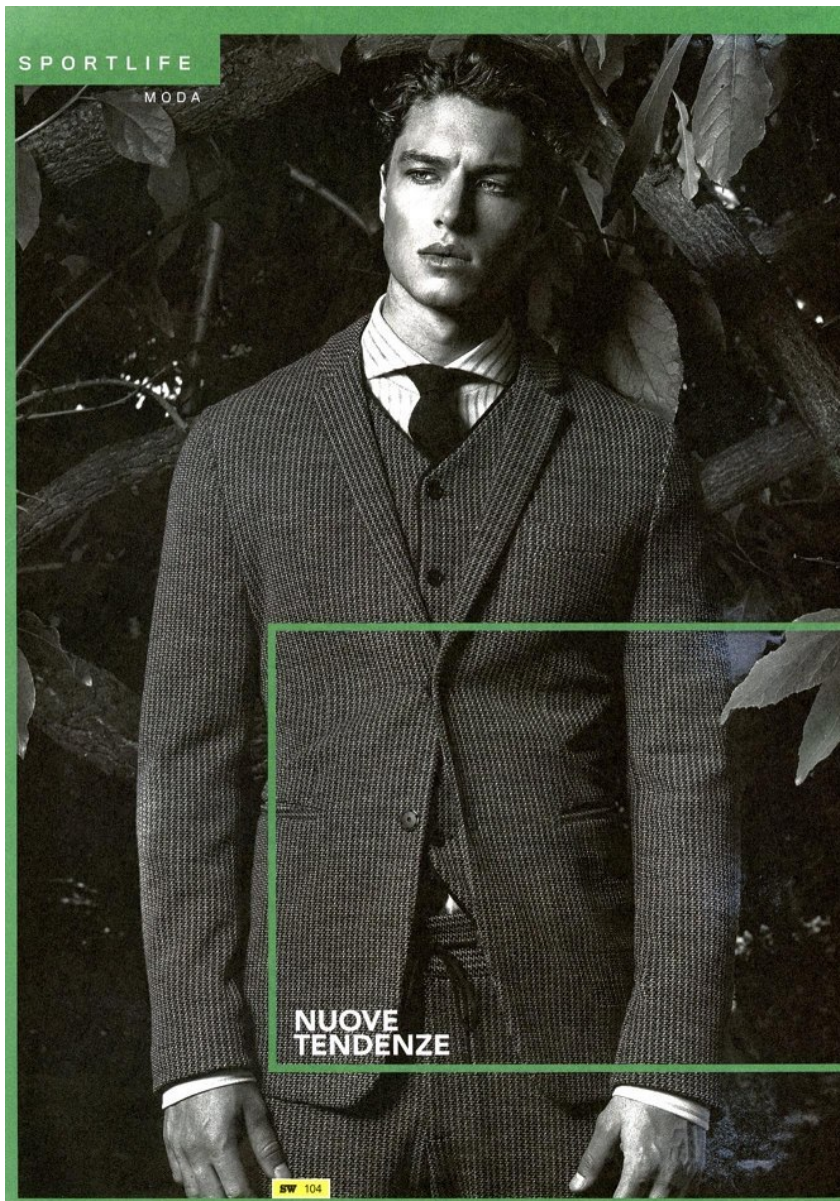
Grooming Franco Chessa  
@WM Management  
Si ringrazia Villa Taranto  
(Verbania) [www.villataranto.it](http://www.villataranto.it)

SW 105

**anm**  
MANAGEMENT

1159 Dundas St. E, #148 Toronto, ON M4M 3N9  
Email: [info@anm-mgmt.com](mailto:info@anm-mgmt.com) Tel: 1.416.792.0357  
[www.anm-mgmt.com](http://www.anm-mgmt.com)





## BRANDON LOGIE

Height 6'0" / 183cm

Chest 41" / 104cm Waist 32" / 81cm Inseam 32" / 81cm Suit 40" / 101cm / 50 Shoes 10.5

US / 44.5 EU / 10 UK

Hair Brown Eyes Blue / Green



**anm**  
MANAGEMENT

1159 Dundas St. E, #148 Toronto, ON M4M 3N9  
Email: [info@anm-mgmt.com](mailto:info@anm-mgmt.com) Tel: 1.416.792.0357  
[www.anm-mgmt.com](http://www.anm-mgmt.com)



## **BRANDON LOGIE**

Height 6'0" / 183cm

Chest 41" / 104cm Waist 32" / 81cm Inseam 32" / 81cm Suit 40" / 101cm / 50 Shoes 10.5

US / 44.5 EU / 10 UK

Hair Brown Eyes Blue / Green



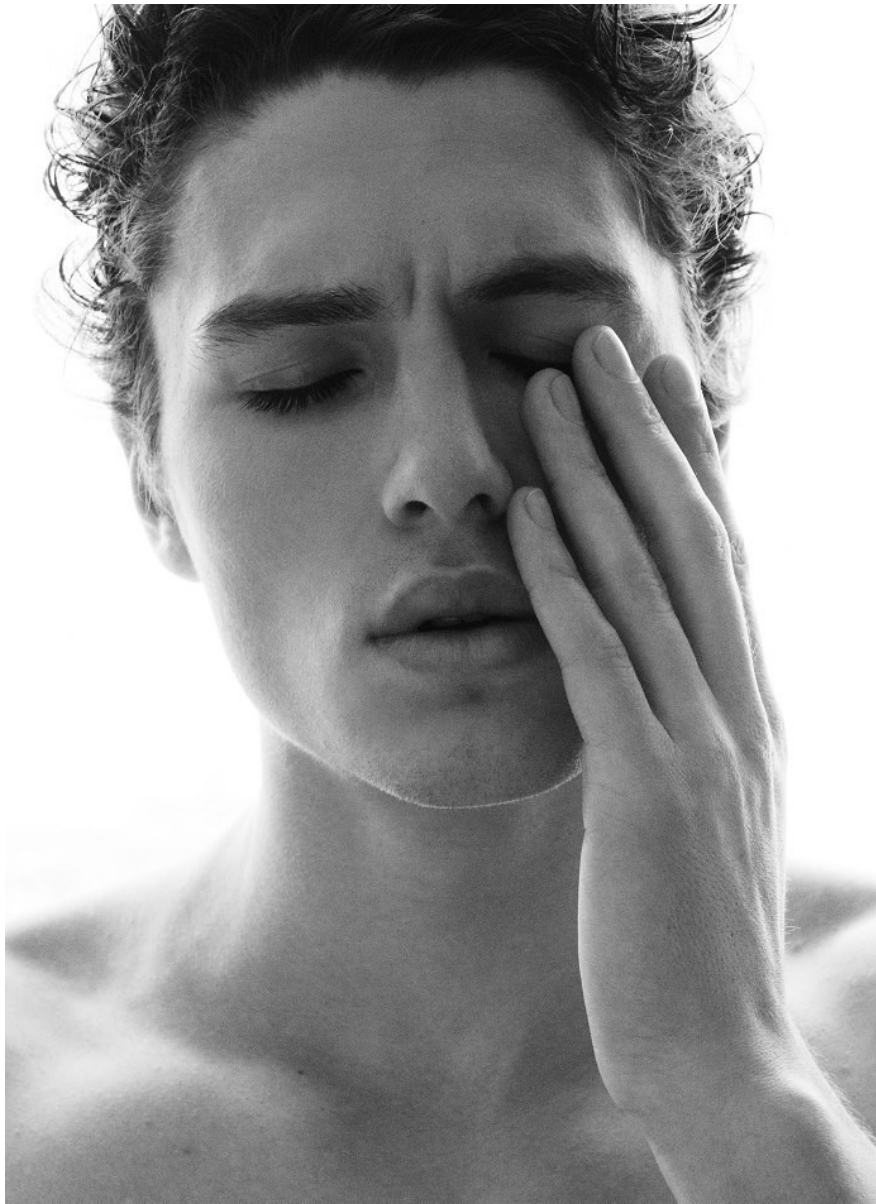
**anm**  
MANAGEMENT

1159 Dundas St. E, #148 Toronto, ON M4M 3N9

Email: [info@anm-mgmt.com](mailto:info@anm-mgmt.com) Tel: 1.416.792.0357

[www.anm-mgmt.com](http://www.anm-mgmt.com)





## **BRANDON LOGIE**

Height 6'0" / 183cm

Chest 41" / 104cm Waist 32" / 81cm Inseam 32" / 81cm Suit 40" / 101cm / 50 Shoes 10.5

US / 44.5 EU / 10 UK

Hair Brown Eyes Blue / Green



**anm**  
MANAGEMENT

1159 Dundas St. E, #148 Toronto, ON M4M 3N9  
Email: [info@anm-mgmt.com](mailto:info@anm-mgmt.com) Tel: 1.416.792.0357

[www.anm-mgmt.com](http://www.anm-mgmt.com)



## **BRANDON LOGIE**

Height 6'0" / 183cm

Chest 41" / 104cm Waist 32" / 81cm Inseam 32" / 81cm Suit 40" / 101cm / 50 Shoes 10.5

US / 44.5 EU / 10 UK

Hair Brown Eyes Blue / Green



**anm**  
MANAGEMENT

1159 Dundas St. E, #148 Toronto, ON M4M 3N9  
Email: [info@anm-mgmt.com](mailto:info@anm-mgmt.com) Tel: 1.416.792.0357

[www.anm-mgmt.com](http://www.anm-mgmt.com)



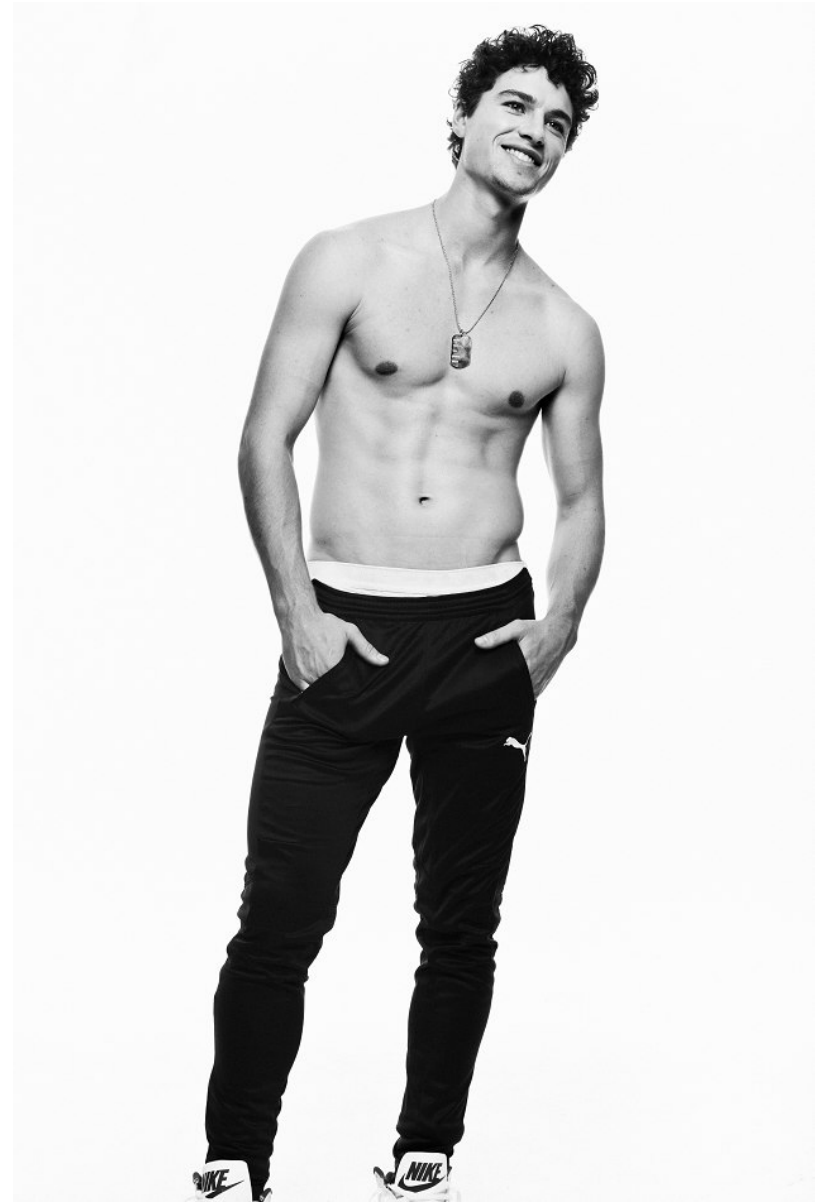
## **BRANDON LOGIE**

Height 6'0" / 183cm

Chest 41" / 104cm Waist 32" / 81cm Inseam 32" / 81cm Suit 40" / 101cm / 50 Shoes 10.5

US / 44.5 EU / 10 UK

Hair Brown Eyes Blue / Green



**anm**  
MANAGEMENT

1159 Dundas St. E, #148 Toronto, ON M4M 3N9  
Email: [info@anm-mgmt.com](mailto:info@anm-mgmt.com) Tel: 1.416.792.0357

[www.anm-mgmt.com](http://www.anm-mgmt.com)





## **BRANDON LOGIE**

Height 6'0" / 183cm

Chest 41" / 104cm Waist 32" / 81cm Inseam 32" / 81cm Suit 40" / 101cm / 50 Shoes 10.5

US / 44.5 EU / 10 UK

Hair Brown Eyes Blue / Green



**anm**  
MANAGEMENT

1159 Dundas St. E, #148 Toronto, ON M4M 3N9  
Email: [info@anm-mgmt.com](mailto:info@anm-mgmt.com) Tel: 1.416.792.0357  
[www.anm-mgmt.com](http://www.anm-mgmt.com)





## BRANDON LOGIE

Height 6'0" / 183cm

Chest 41" / 104cm Waist 32" / 81cm Inseam 32" / 81cm Suit 40" / 101cm / 50 Shoes 10.5  
US / 44.5 EU / 10 UK

Hair Brown Eyes Blue / Green



**A SINISTRA**  
Giacca in shearling,  
camicia in seta a righe  
e pantaloni a vita alta in  
nappa con pinces, tutto  
**Giorgio Armani**  
(prezzi su richiesta).

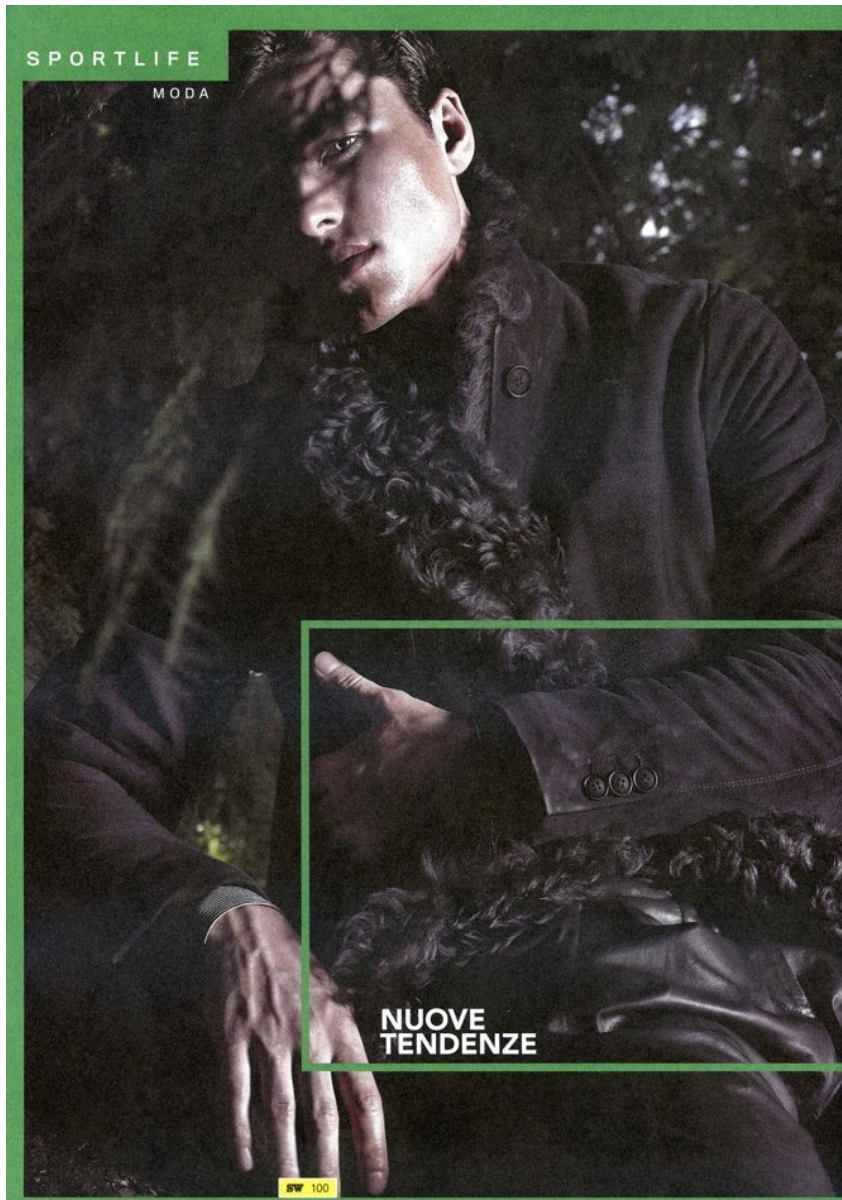
**A DESTRA**  
Caban oversize  
doppiopetto in shearling,  
giilet in cuoio con tasche  
applicato, frange e zip in  
metallo e borsa weekend  
multizip in pelle incisa,  
tutto **Dsquared2**  
(prezzi su richiesta).

SW 101

**anm**  
MANAGEMENT

1159 Dundas St. E, #148 Toronto, ON M4M 3N9  
Email: [info@anm-mgmt.com](mailto:info@anm-mgmt.com) Tel: 1.416.792.0357  
[www.anm-mgmt.com](http://www.anm-mgmt.com)





## BRANDON LOGIE

Height 6'0" / 183cm

Chest 41" / 104cm Waist 32" / 81cm Inseam 32" / 81cm Suit 40" / 101cm / 50 Shoes 10.5  
US / 44.5 EU / 10 UK

Hair Brown Eyes Blue / Green



**anm**  
MANAGEMENT

1159 Dundas St. E, #148 Toronto, ON M4M 3N9  
Email: [info@anm-mgmt.com](mailto:info@anm-mgmt.com) Tel: 1.416.792.0357  
[www.anm-mgmt.com](http://www.anm-mgmt.com)