

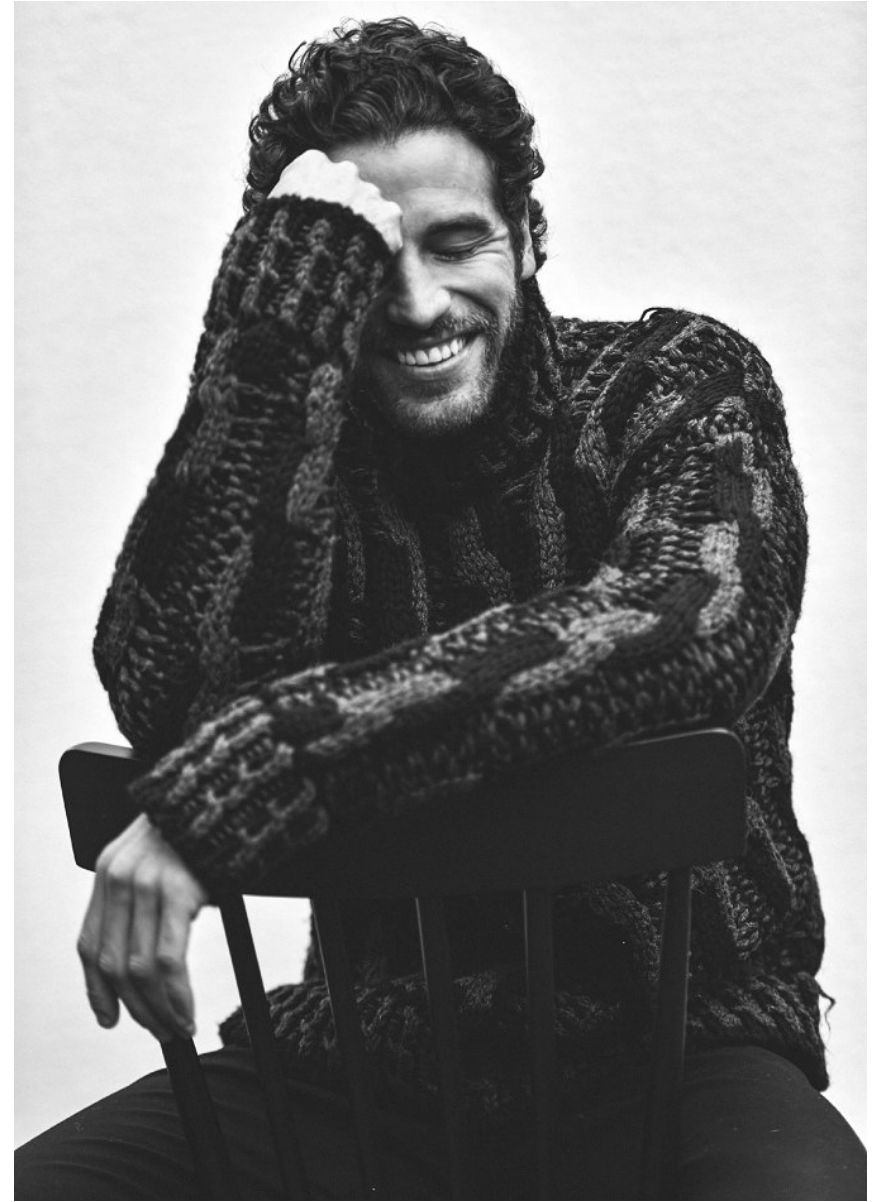


PAUL FERRARI

Height 6'2" / 188cm

Chest 41" / 104cm Waist 32" / 81cm Suit 43" / 109cm / 53 Shoes 10 US / 44 EU / 9.5 UK

Hair Brown Eyes Green



anm
MANAGEMENT

1159 Dundas St. E, #148 Toronto, ON M4M 3N9
Email: info@anm-mgmt.com Tel: 1.416.792.0357

www.anm-mgmt.com



PAUL FERRARI

Height 6'2" / 188cm

Chest 41" / 104cm Waist 32" / 81cm Suit 43" / 109cm / 53 Shoes 10 US / 44 EU / 9.5 UK

Hair *Brown* Eyes *Green*



anm
MANAGEMENT

1159 Dundas St. E, #148 Toronto, ON M4M 3N9
Email: info@anm-mgmt.com Tel: 1.416.792.0357
www.anm-mgmt.com



Extra fine wool three piece
suit with timeless
Prince of Wales motif.
White Sea island cotton
shirt and striped silk tie.
Black Derby shoes in calf
leather with fur lining.

Kition

PAUL FERRARI

Height 6'2" / 188cm

Chest 41" / 104cm Waist 32" / 81cm Suit 43" / 109cm / 53 Shoes 10 US / 44 EU / 9.5 UK

Hair Brown Eyes Green



anm
MANAGEMENT

1159 Dundas St. E, #148 Toronto, ON M4M 3N9
Email: info@anm-mgmt.com Tel: 1.416.792.0357
www.anm-mgmt.com



PAUL FERRARI

Height 6'2" / 188cm

Chest 41" / 104cm Waist 32" / 81cm Suit 43" / 109cm / 53 Shoes 10 US / 44 EU / 9.5 UK

Hair *Brown* Eyes *Green*



anm
MANAGEMENT

1159 Dundas St. E, #148 Toronto, ON M4M 3N9

Email: info@anm-mgmt.com Tel: 1.416.792.035

www.anm-mgmt.com



PAUL FERRARI

Height 6'2" / 188cm

Chest 41" / 104cm Waist 32" / 81cm Suit 43" / 109cm / 53 Shoes 10 US / 44 EU / 9.5 UK

Hair Brown Eyes Green



anm
MANAGEMENT

1159 Dundas St. E, #148 Toronto, ON M4M 3N9
Email: info@anm-mgmt.com Tel: 1.416.792.0357
www.anm-mgmt.com

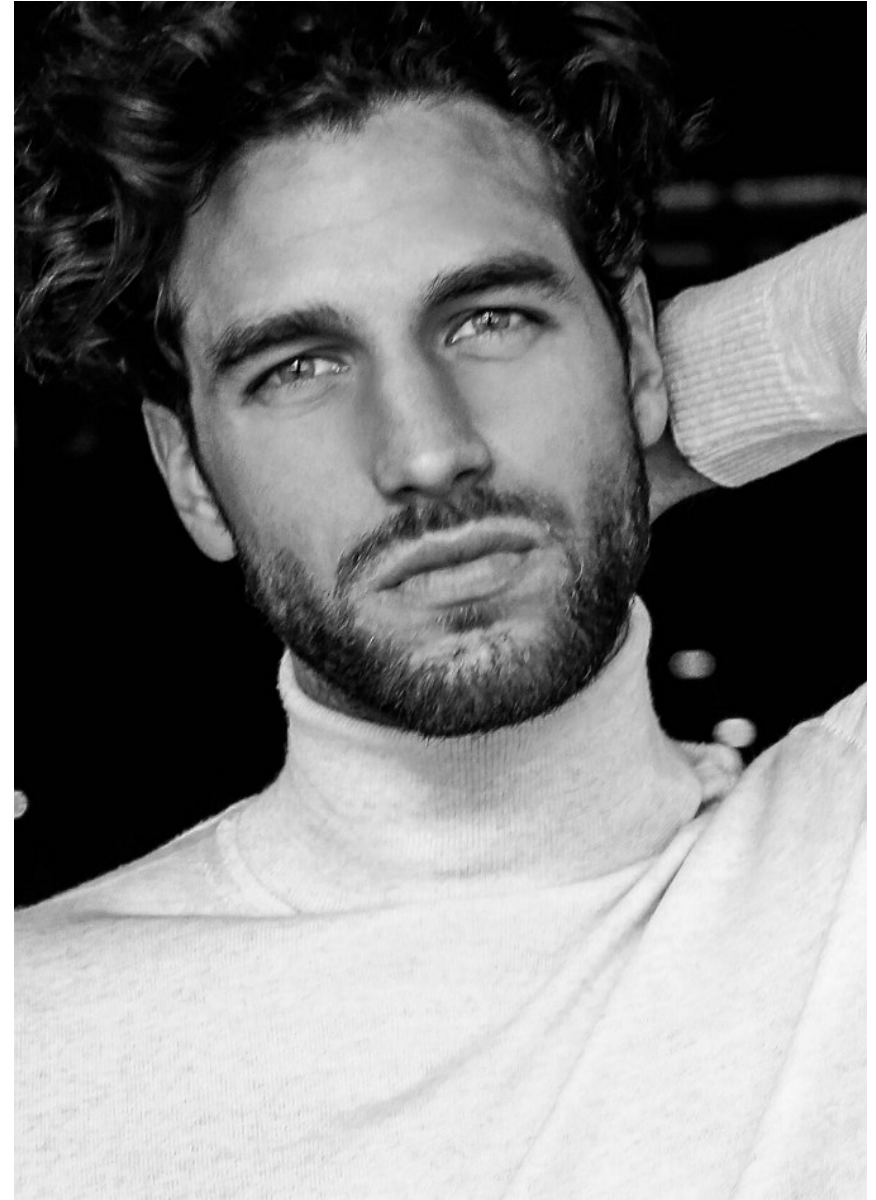


PAUL FERRARI

Height 6'2" / 188cm

Chest 41" / 104cm Waist 32" / 81cm Suit 43" / 109cm / 53 Shoes 10 US / 44 EU / 9.5 UK

Hair Brown Eyes Green



anm
MANAGEMENT

1159 Dundas St. E, #148 Toronto, ON M4M 3N9
Email: info@anm-mgmt.com Tel: 1.416.792.0357
www.anm-mgmt.com