

PARKER GREGORY

Height 6'2" / 188cm

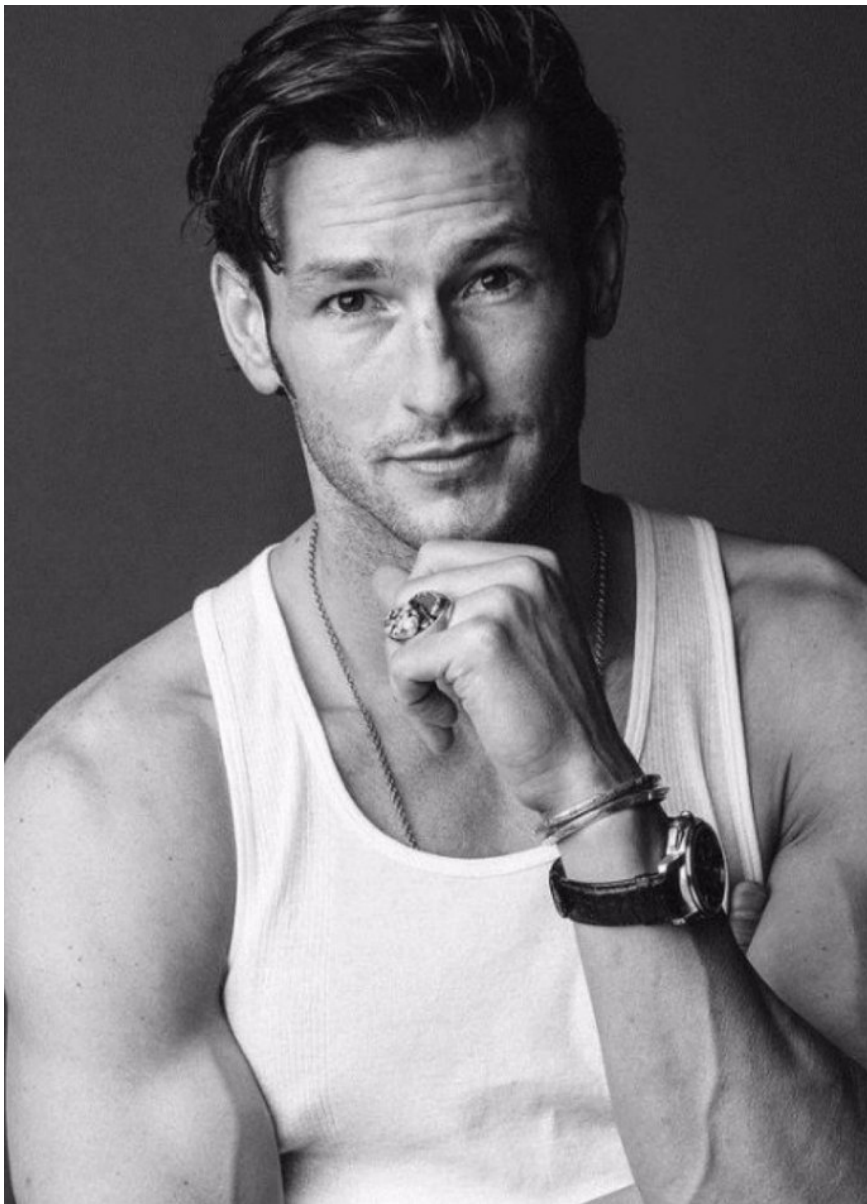
Chest 38" / 97cm Waist 32" / 81cm Inseam 33" / 84cm Suit 40" / 101cm / 50 Shoes 13 US / 48
EU / 12.5 UK

Hair Brown Eyes Brown



anm
MANAGEMENT

1159 Dundas St. E, #148 Toronto, ON M4M 3N9
Email: info@anm-mgmt.com Tel: 1.416.792.0357
www.anm-mgmt.com



PARKER GREGORY

Height 6'2" / 188cm

Chest 38" / 97cm Waist 32" / 81cm Inseam 33" / 84cm Suit 40" / 101cm / 50 Shoes 13 US / 48

EU / 12.5 UK

Hair Brown Eyes Brown

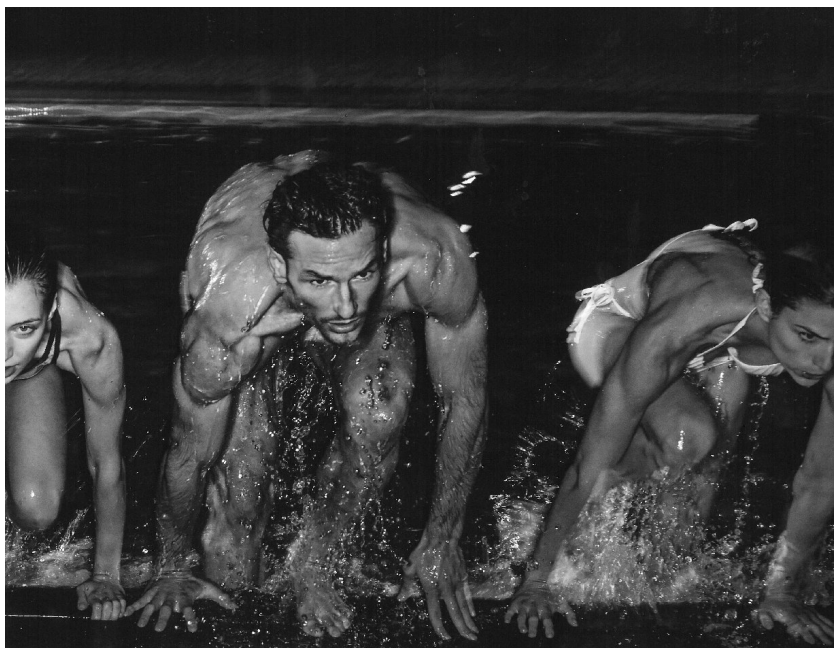


anm
MANAGEMENT

1159 Dundas St. E, #148 Toronto, ON M4M 3N9

Email: info@anm-mgmt.com Tel: 1.416.792.0357

www.anm-mgmt.com



PARKER GREGORY

Height 6'2" / 188cm

Chest 38" / 97cm Waist 32" / 81cm Inseam 33" / 84cm Suit 40" / 101cm / 50 Shoes 13 US / 48

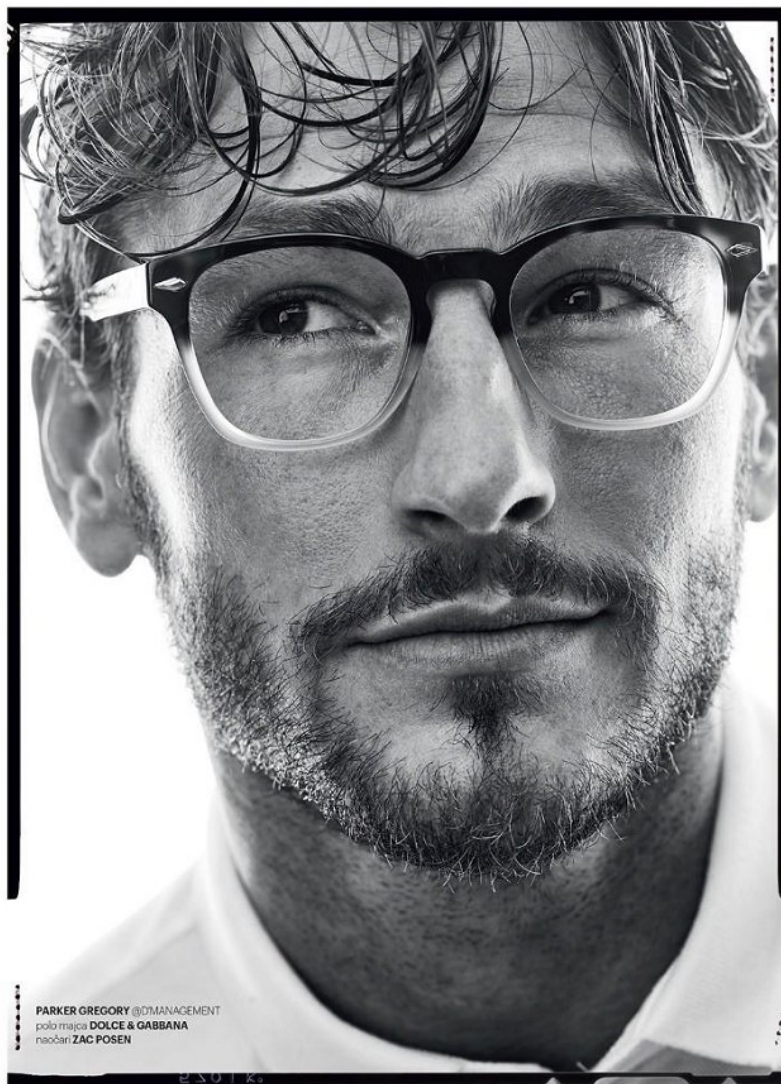
EU / 12.5 UK

Hair *Brown* Eyes *Brown*



anm
MANAGEMENT

1159 Dundas St. E, #148 Toronto, ON M4M 3N9
Email: info@anm-mgmt.com Tel: 1.416.792.0357
www.anm-mgmt.com



PARKER GREGORY @DMANAGEMENT
 polo majica DOLCE & GABBANA
 naočari ZAC POSEN

123

PARKER GREGORY

Height 6'2" / 188cm

Chest 38" / 97cm Waist 32" / 81cm Inseam 33" / 84cm Suit 40" / 101cm / 50 Shoes 13 US / 48

EU / 12.5 UK

Hair Brown Eyes Brown

Esquire

MART 2017 / Broj 36



Naslovnik: ALEKSANDAR KUKOLJ
 Foto: MILOŠ NAKAŽIĆ
 Modna urednica: SENKA KLJAKIĆ
 Intervju: MILAN NIKOLIĆ

SADRŽAJ

- 022-
GOSHA RUBCHINSKIY
Ruski dizajner koji je pokorio planetu
- 032-
STARI I NOVI SPORTOVI
Koji je pravi a koji to nije
- 042-
PO VEŠU SE STIL POZNAJE
Glavni utisak se stiče tek nakon svlačenja
- 049-
ESQ STIL
NAPOLJU JE ZABAVNIJE
Sveobuhvatni vodič za prolećno
obnavljanje garderobe
- 70-
ALEKSANDAR KUKOLJ
Razmišljajte kao šampion
- 19-
Novo poglavije za Slavena Došla
- 58-
Afterparti s Lukom Buraćem
- 62-
I čovek i brend - Paul Smith
- 90-
Stilske inovacije: tri u jednom -
posao, opuštanje, provod
- 106-
Neka vaš stil govori umesto vas:
Watch me!

12 ESQUIRE - APRIL 2017.



Fotograf: VINI CERKASI, STIL: STEPHAN BASKIC, Creators: RICCY RICE, Kreativ: BALMAIN HAIR CULTURE, Modeli: PARKER GREGORY @DMANAGEMENT

anm
 MANAGEMENT

1159 Dundas St. E, #148 Toronto, ON M4M 3N9
 Email: info@anm-mgmt.com Tel: 1.416.792.0357
 www.anm-mgmt.com



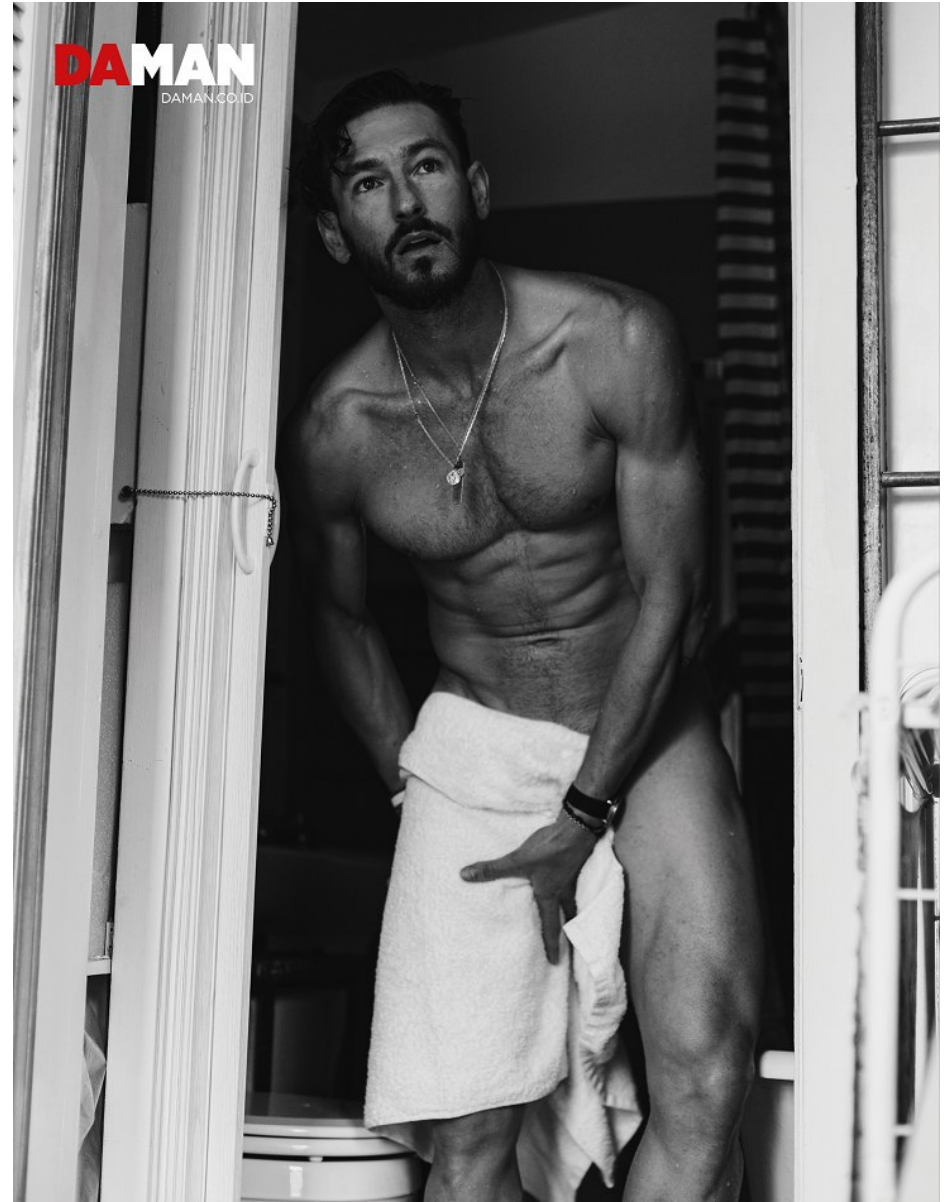
PARKER GREGORY

Height 6'2" / 188cm

Chest 38" / 97cm Waist 32" / 81cm Inseam 33" / 84cm Suit 40" / 101cm / 50 Shoes 13 US / 48

EU / 12.5 UK

Hair Brown Eyes Brown



anm
MANAGEMENT

1159 Dundas St. E, #148 Toronto, ON M4M 3N9

Email: info@anm-mgmt.com Tel: 1.416.792.0357

www.anm-mgmt.com



PARKER GREGORY

Height 6'2" / 188cm

Chest 38" / 97cm Waist 32" / 81cm Inseam 33" / 84cm Suit 40" / 101cm / 50 Shoes 13 US / 48

EU / 12.5 UK

Hair *Brown* Eyes *Brown*



anm
MANAGEMENT

1159 Dundas St. E, #148 Toronto, ON M4M 3N9

Email: info@anm-mgmt.com Tel: 1.416.792.0357

www.anm-mgmt.com



PARKER GREGORY

Height 6'2" / 188cm

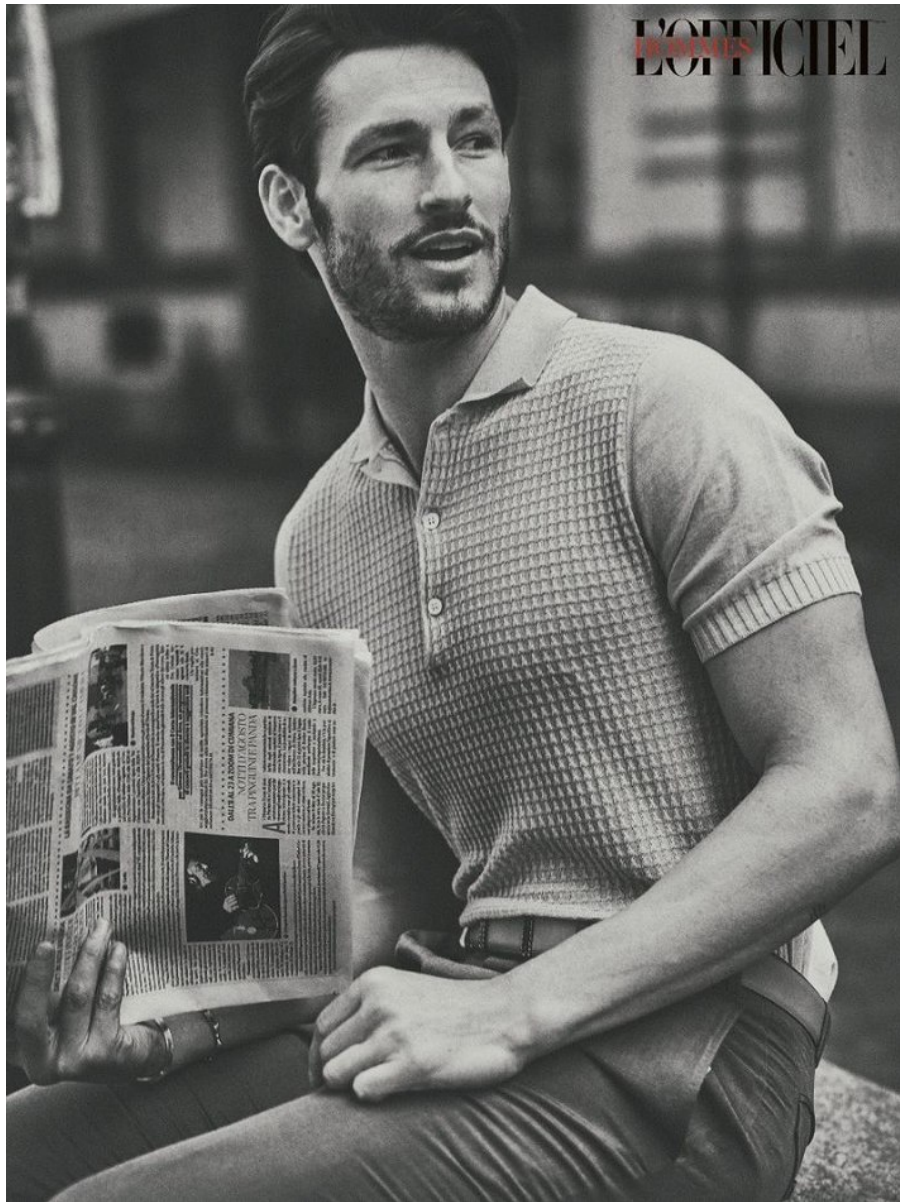
Chest 38" / 97cm Waist 32" / 81cm Inseam 33" / 84cm Suit 40" / 101cm / 50 Shoes 13 US / 48

EU / 12.5 UK

Hair Brown Eyes Brown

anm
MANAGEMENT

1159 Dundas St. E, #148 Toronto, ON M4M 3N9
Email: info@anm-mgmt.com Tel: 1.416.792.0357
www.anm-mgmt.com

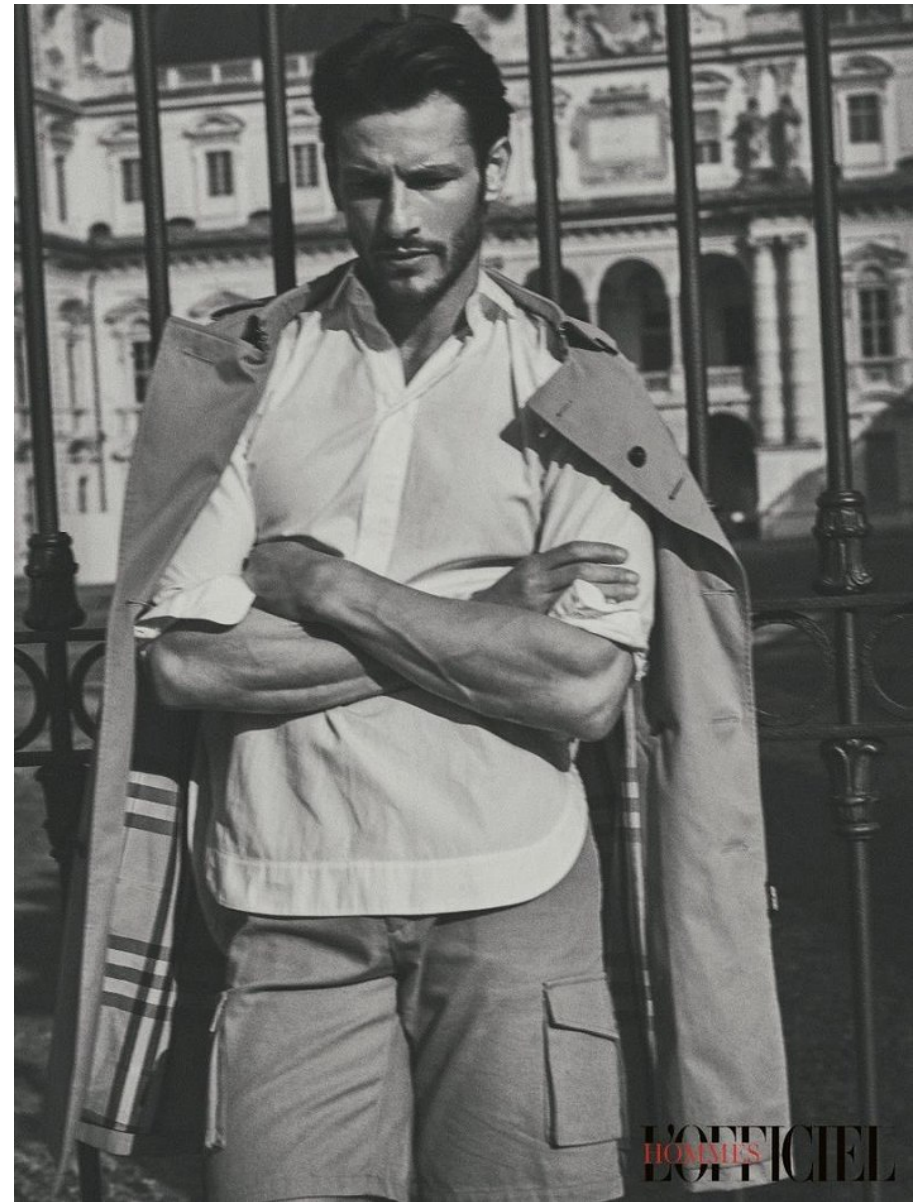


PARKER GREGORY

Height 6'2" / 188cm

Chest 38" / 97cm Waist 32" / 81cm Inseam 33" / 84cm Suit 40" / 101cm / 50 Shoes 13 US / 48
EU / 12.5 UK

Hair Brown Eyes Brown



anm
MANAGEMENT

1159 Dundas St. E, #148 Toronto, ON M4M 3N9
Email: info@anm-mgmt.com Tel: 1.416.792.0357
www.anm-mgmt.com



PARKER GREGORY

Height 6'2" / 188cm

Chest 38" / 97cm Waist 32" / 81cm Inseam 33" / 84cm Suit 40" / 101cm / 50 Shoes 13 US / 48
EU / 12.5 UK

Hair *Brown* Eyes *Brown*



anm
MANAGEMENT

1159 Dundas St. E, #148 Toronto, ON M4M 3N9
Email: info@anm-mgmt.com Tel: 1.416.792.0357
www.anm-mgmt.com



PARKER GREGORY

Height 6'2" / 188cm

Chest 38" / 97cm Waist 32" / 81cm Inseam 33" / 84cm Suit 40" / 101cm / 50 Shoes 13 US / 48
EU / 12.5 UK

Hair *Brown* Eyes *Brown*



anm
MANAGEMENT

1159 Dundas St. E, #148 Toronto, ON M4M 3N9
Email: info@anm-mgmt.com Tel: 1.416.792.0357
www.anm-mgmt.com



DETECT THE PATTERN

Amidst a sea of black coats on your morning commute, you'll stand out in this Prince of Wales check coat. This pattern consists of tightly woven small and large checks in muted colours (greys, blues and whites). It's easy to wear over any solid-colour item in your wardrobe, from tailored sweats to business suits.

Coat R2 299 and Jacket R629 both hm.co.za, Polo Neck, R1 149 Calvin Klein (087 822 4422), Track Pants R1 299 superdry.com, Sling Bag R400 cottonon.com/ZAF

52 M.H.CO.ZA May 2020



STAY DRY IN STYLE

There's no reason a raincoat can't be stylish. A single-breasted one is your best bet for an easy-wearing waterproof layer. You'd do well to keep the shell of your coat simple, but bring a bit of life to the look by opting for bolder layers underneath. A slightly tapered hoodie is a great choice for smart (and warm) layering during colder months. Post gym getup sorted.

Coat R3 890 Antony Morato (011 517 2435), Hoodie R429 hm.co.za, Tights R1 099 superdry.com, Zig Kinetic Trainers R1 999 reebok.co.za

M.H.CO.ZA May 2020 47

PARKER GREGORY

Height 6'2" / 188cm

Chest 38" / 97cm Waist 32" / 81cm Inseam 33" / 84cm Suit 40" / 101cm / 50 Shoes 13 US / 48

EU / 12.5 UK

Hair Brown Eyes Brown

anm
MANAGEMENT

1159 Dundas St. E, #148 Toronto, ON M4M 3N9
Email: info@anm-mgmt.com Tel: 1.416.792.0357
www.anm-mgmt.com



PARKER GREGORY

Height 6'2" / 188cm

Chest 38" / 97cm Waist 32" / 81cm Inseam 33" / 84cm Suit 40" / 101cm / 50 Shoes 13 US / 48

EU / 12.5 UK

Hair *Brown* Eyes *Brown*



anm
MANAGEMENT

1159 Dundas St. E, #148 Toronto, ON M4M 3N9
Email: info@anm-mgmt.com Tel: 1.416.792.0357
www.anm-mgmt.com



PARKER GREGORY

Height 6'2" / 188cm

Chest 38" / 97cm Waist 32" / 81cm Inseam 33" / 84cm Suit 40" / 101cm / 50 Shoes 13 US / 48

EU / 12.5 UK

Hair *Brown* Eyes *Brown*



anm
MANAGEMENT

1159 Dundas St. E, #148 Toronto, ON M4M 3N9
Email: info@anm-mgmt.com Tel: 1.416.792.0357
www.anm-mgmt.com



PARKER GREGORY

Height 6'2" / 188cm

Chest 38" / 97cm Waist 32" / 81cm Inseam 33" / 84cm Suit 40" / 101cm / 50 Shoes 13 US / 48

EU / 12.5 UK

Hair Brown Eyes Brown



anm
MANAGEMENT

1159 Dundas St. E, #148 Toronto, ON M4M 3N9
Email: info@anm-mgmt.com Tel: 1.416.792.0357
www.anm-mgmt.com



PARKER GREGORY

Height 6'2" / 188cm

Chest 38" / 97cm Waist 32" / 81cm Inseam 33" / 84cm Suit 40" / 101cm / 50 Shoes 13 US / 48

EU / 12.5 UK

Hair *Brown* Eyes *Brown*

anm
MANAGEMENT

1159 Dundas St. E, #148 Toronto, ON M4M 3N9
Email: info@anm-mgmt.com Tel: 1.416.792.0357
www.anm-mgmt.com



Dequard2 Cotton Black Sweater
 [\$995, dsquared2.com/us/];
Zegna Linen Workwear Trousers
 [\$1,495, zegna.com];
Buck Mason Field Spec Surplus Tee
 [\$45, buckmason.com].



Buck Mason Herdsman Shawl Cardigan
 [\$225, buckmason.com];
Dequard2 Plaid shirt
 [price upon request, dsquared2.com/us/];
Citizen Promaster Navihawk A-T Watch
 [\$695, citizenwatch.com].

PARKER GREGORY

Height 6'2" / 188cm

Chest 38" / 97cm Waist 32" / 81cm Inseam 33" / 84cm Suit 40" / 101cm / 50 Shoes 13 US / 48

EU / 12.5 UK

Hair Brown Eyes Brown

anm
 MANAGEMENT

1159 Dundas St. E, #148 Toronto, ON M4M 3N9
 Email: info@anm-mgmt.com Tel: 1.416.792.0357
www.anm-mgmt.com



PARKER GREGORY

Height 6'2" / 188cm

Chest 38" / 97cm Waist 32" / 81cm Inseam 33" / 84cm Suit 40" / 101cm / 50 Shoes 13 US / 48

EU / 12.5 UK

Hair Brown Eyes Brown



anm
MANAGEMENT

1159 Dundas St. E, #148 Toronto, ON M4M 3N9
Email: info@anm-mgmt.com Tel: 1.416.792.0357
www.anm-mgmt.com