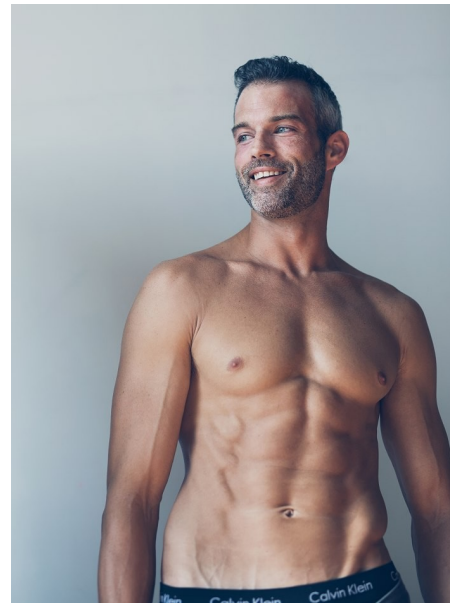


LADIES & GENTLEMAN  
Jacket - Hugo Boss, Suit - Divine Dandemon, Shirt - Christian Dior et Divite Dandemon  
Belt and tie - Hugo Boss, Footwear - Prada

PHOTO: MORGAN.COM



# GRAHAM O'HAGAN

Height 6'2" / 188cm

Chest 40.5" / 103cm Waist 31" / 79cm Inseam 34" / 86cm Suit 40" / 101cm / 50 Shoes 11

US / 45.5 EU / 10.5 UK

Hair Grey - Black Eyes Blue

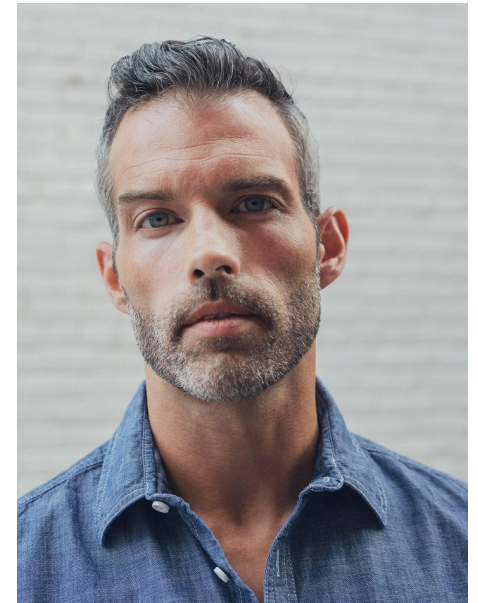
**anm**  
MANAGEMENT

1159 Dundas St. E, #148 Toronto, ON M4M 3N9

Email: info@anm-mgmt.com Tel: 1.416.792.0357

www.anm-mgmt.com





## GRAHAM O'HAGAN

Height 6'2" / 188cm

Chest 40.5" / 103cm Waist 31" / 79cm Inseam 34" / 86cm Suit 40" / 101cm / 50 Shoes 11

US / 45.5 EU / 10.5 UK

Hair Grey - Black Eyes Blue

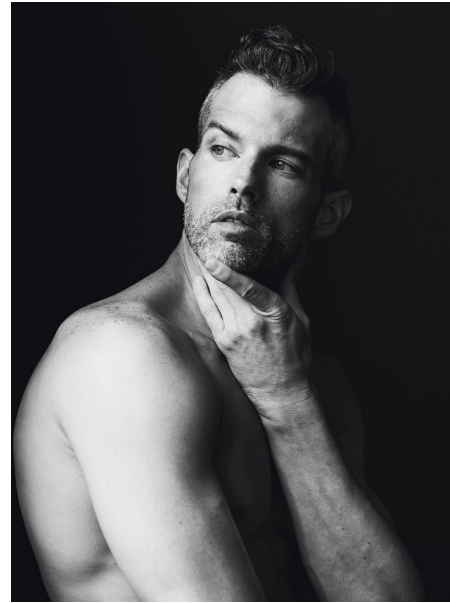
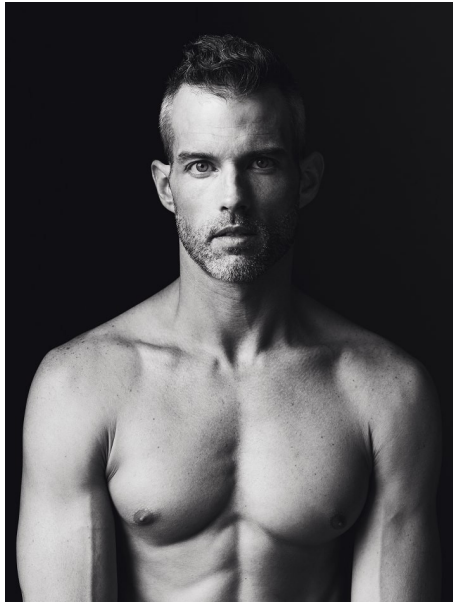
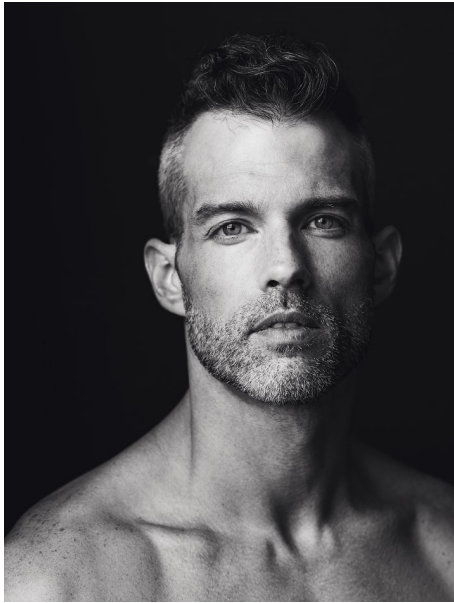
**anm**  
MANAGEMENT

1159 Dundas St. E, #148 Toronto, ON M4M 3N9

Email: [info@anm-mgmt.com](mailto:info@anm-mgmt.com) Tel: 1.416.792.0357

[www.anm-mgmt.com](http://www.anm-mgmt.com)





## GRAHAM O'HAGAN

Height 6'2" / 188cm

Chest 40.5" / 103cm Waist 31" / 79cm Inseam 34" / 86cm Suit 40" / 101cm / 50 Shoes 11

US / 45.5 EU / 10.5 UK

Hair Grey - Black Eyes Blue

**anm**  
MANAGEMENT

1159 Dundas St. E, #148 Toronto, ON M4M 3N9  
Email: [info@anm-mgmt.com](mailto:info@anm-mgmt.com) Tel: 1.416.792.0357

[www.anm-mgmt.com](http://www.anm-mgmt.com)



## GRAHAM O'HAGAN

Height 6'2" / 188cm

Chest 40.5" / 103cm Waist 31" / 79cm Inseam 34" / 86cm Suit 40" / 101cm / 50 Shoes 11 US / 45.5

EU / 10.5 UK

Hair Grey - Black Eyes Blue

**anm**  
MANAGEMENT

1159 Dundas St. E, #148 Toronto, ON M4M 3N9  
Email: [info@anm-mgmt.com](mailto:info@anm-mgmt.com) Tel: 1.416.792.0357  
[www.anm-mgmt.com](http://www.anm-mgmt.com)