

## KAI CHIN

Height 6'1.5" / 186cm

Chest 38" / 97cm Waist 30" / 76cm Inseam 32" / 81cm Suit 40" / 102cm / 50 Shoes 11 US / 45.5

EU / 10.5 UK

Hair *Black* Eyes *Brown*

**anm**  
MANAGEMENT

1159 Dundas St. E, #148 Toronto, ON M4M 3N9

Email: [info@anm-mgmt.com](mailto:info@anm-mgmt.com) Tel: 1.416.792.0357

[www.anm-mgmt.com](http://www.anm-mgmt.com)



# KAI CHIN

Height 6'1.5" / 186cm

Chest 38" / 97cm Waist 30" / 76cm Inseam 32" / 81cm Suit 40" / 102cm / 50 Shoes 11 US / 45.5

EU / 10.5 UK

Hair Black Eyes Brown

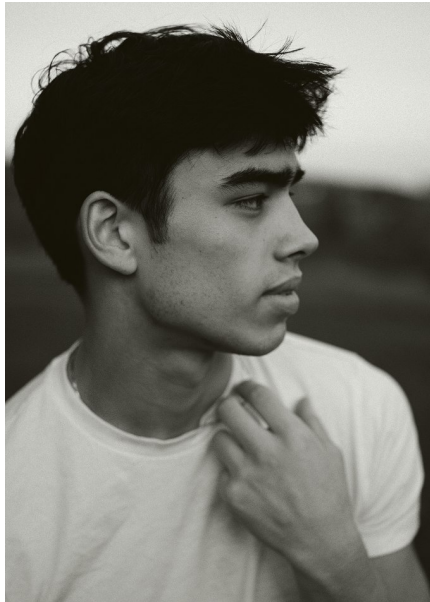
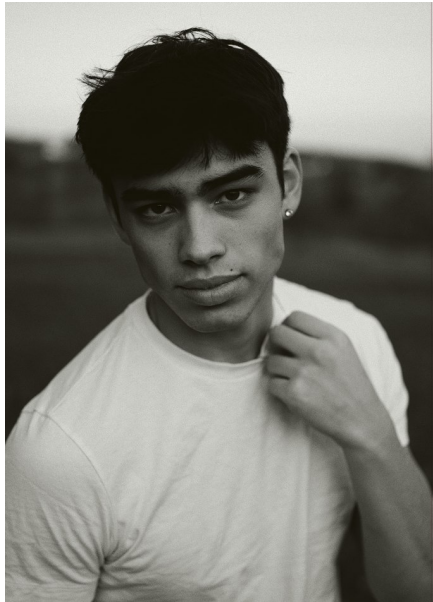
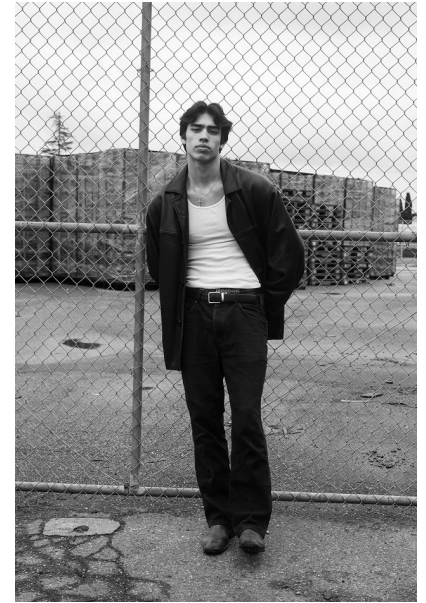
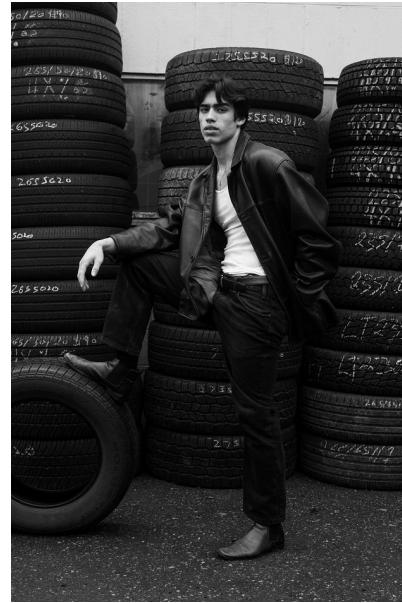
# anm

MANAGEMENT

1159 Dundas St. E, #148 Toronto, ON M4M 3N9

Email: info@anm-mgmt.com Tel: 1.416.792.0357

www.anm-mgmt.com



# KAI CHIN

Height 6'1.5" / 186cm

Chest 38" / 97cm Waist 30" / 76cm Inseam 32" / 81cm Suit 40" / 102cm / 50 Shoes 11 US / 45.5

EU / 10.5 UK

Hair Black Eyes Brown

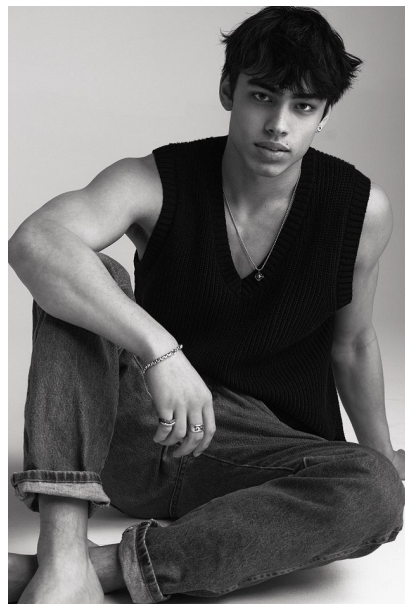
# anm

MANAGEMENT

1159 Dundas St. E, #148 Toronto, ON M4M 3N9

Email: [info@anm-mgmt.com](mailto:info@anm-mgmt.com) Tel: 1.416.792.0357

[www.anm-mgmt.com](http://www.anm-mgmt.com)



## **KAI CHIN**

Height 6'1.5" / 186cm

Chest 38" / 97cm Waist 30" / 76cm Inseam 32" / 81cm Suit 40" / 102cm / 50 Shoes 11 US / 45.5

EU / 10.5 UK

Hair Black Eyes Brown

**anm**  
MANAGEMENT

1159 Dundas St. E, #148 Toronto, ON M4M 3N9  
Email: [info@anm-mgmt.com](mailto:info@anm-mgmt.com) Tel: 1.416.792.0357  
[www.anm-mgmt.com](http://www.anm-mgmt.com)