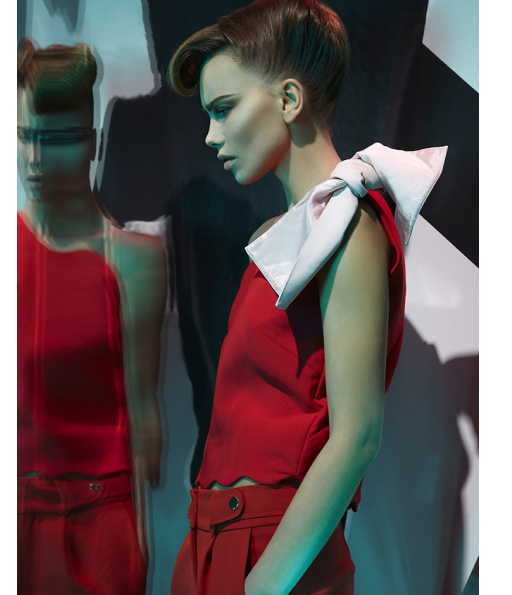


Photo: Mark Lee for Anm, Inc.
Stylist: The Agency, M&C
Hair: M&C, Makeup: Anm
in Toronto, URBAN
DRESS, Lip: M&C
Revlonista Lipstick
in Matte Shade, Nails:
URBAN DECAY



SERAFIMA KOBZEVA

Height 5'9" / 175cm

Bust 32" / 81cm Cup B Waist 24.5" / 62cm Hips 35" / 89cm Dress 2 - 4 US / 32 - 34 EU / 4 - 6

UK Shoes 9 US / 40 EU / 6.5 UK

Hair Blonde Eyes Blue / Green

anm

MANAGEMENT

1159 Dundas St. E, #148 Toronto, ON M4M 3N9

Email: info@anm-mgmt.com Tel: 1.416.792.0357

www.anm-mgmt.com



SERAFIMA KOBZEVA

Height 5'9" / 175cm

Bust 32" / 81cm Cup B Waist 24.5" / 62cm Hips 35" / 89cm Dress 2 - 4 US / 32 - 34 EU / 4 - 6

UK Shoes 9 US / 40 EU / 6.5 UK

Hair Blonde Eyes Blue / Green

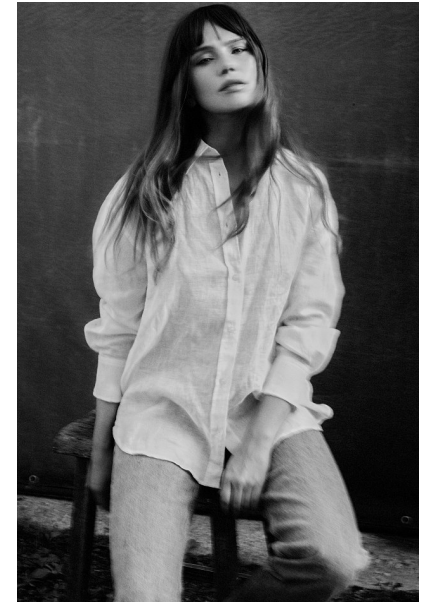
anm MANAGEMENT

1159 Dundas St. E, #148 Toronto, ON M4M 3N9
Email: info@anm-mgmt.com Tel: 1.416.792.0357

www.anm-mgmt.com



*Face: Love Flush in Love Hammer, TOO FACED, Eyes: Eye Color Quad in 191 Printer Kill and 192 Blue
Lagoon, CLÉ DE PEAU BEAUTÉ, Lip: Matte Revolution Espalck in Matte 1993, URBAN DÉCAY.
Opposite page:
Face: Cachouze Foundation in Ombre Nude No. 22, BE BEAUTY BEAUTY, Powder Blush Duo in 1992 Blush
Bliss, Browing Powder Duo in 191, CLÉ DE PEAU BEAUTÉ, Eye: Eye Color Quad in 191 Printer Kill,
CLÉ DE PEAU BEAUTÉ, Argel d'Or in 191, L'ARABESQUE, Just Brandy's Brandy the
Singing Brandy in Deep Brown, CLANQUE, Lip: Lip Perfekt in Amarrin Noir, LAURAMERCIER.*



SERAFIMA KOBZEVA

Height 5'9" / 175cm

Bust 32" / 81cm Cup B Waist 24.5" / 62cm Hips 35" / 89cm Dress 2 - 4 US / 32 - 34 EU / 4 - 6

UK Shoes 9 US / 40 EU / 6.5 UK

Hair Blonde Eyes Blue / Green

anm
MANAGEMENT

1159 Dundas St. E, #148 Toronto, ON M4M 3N9

Email: info@anm-mgmt.com Tel: 1.416.792.0357

www.anm-mgmt.com